



North Park Stone Enclosed Shelter

North Wood County Park

Located at 7500 Park Lane
Arpin, WI 54410

Meetings * Weddings * Graduations * Birthdays * Celebrations * Memorials



POPULAR FOR WEDDINGS!

Available May 1 — October 15

CAPACITY = 250 PEOPLE

Seats 150 comfortably (10/table)

Sat. & Sun. or any full day: 8am-Midnight

M-F 1/2 day: 8am-4pm or 4-Midnight

Holiday Rate: 8am-Midnight

Partial days must be reserved by calling the office.

Visit our website for pricing information

1 Refrigerator

(15) 8 ft. picnic tables inside

(4) 8 ft. picnic tables outside

Shelter is 30'x80' w/a 24'x30' addition plus
an exterior patio 33'x88'

Seating area dimensions (27' x 77') and
kitchen area (13'wide x 21.5')

Ceiling fans, serving counter & kitchen sink

Wood Fireplace

Large charcoal grill

Attached accessible bathrooms

Close to: Volleyball Court- bring your own
ball * 18-hole Disc Golf Course



Find us on:
facebook®

MAKE YOUR RESERVATION NOW!

<https://parksreservations.woodcountywi.gov/parks/>

715-421-8422 / parks@woodcountywi.gov

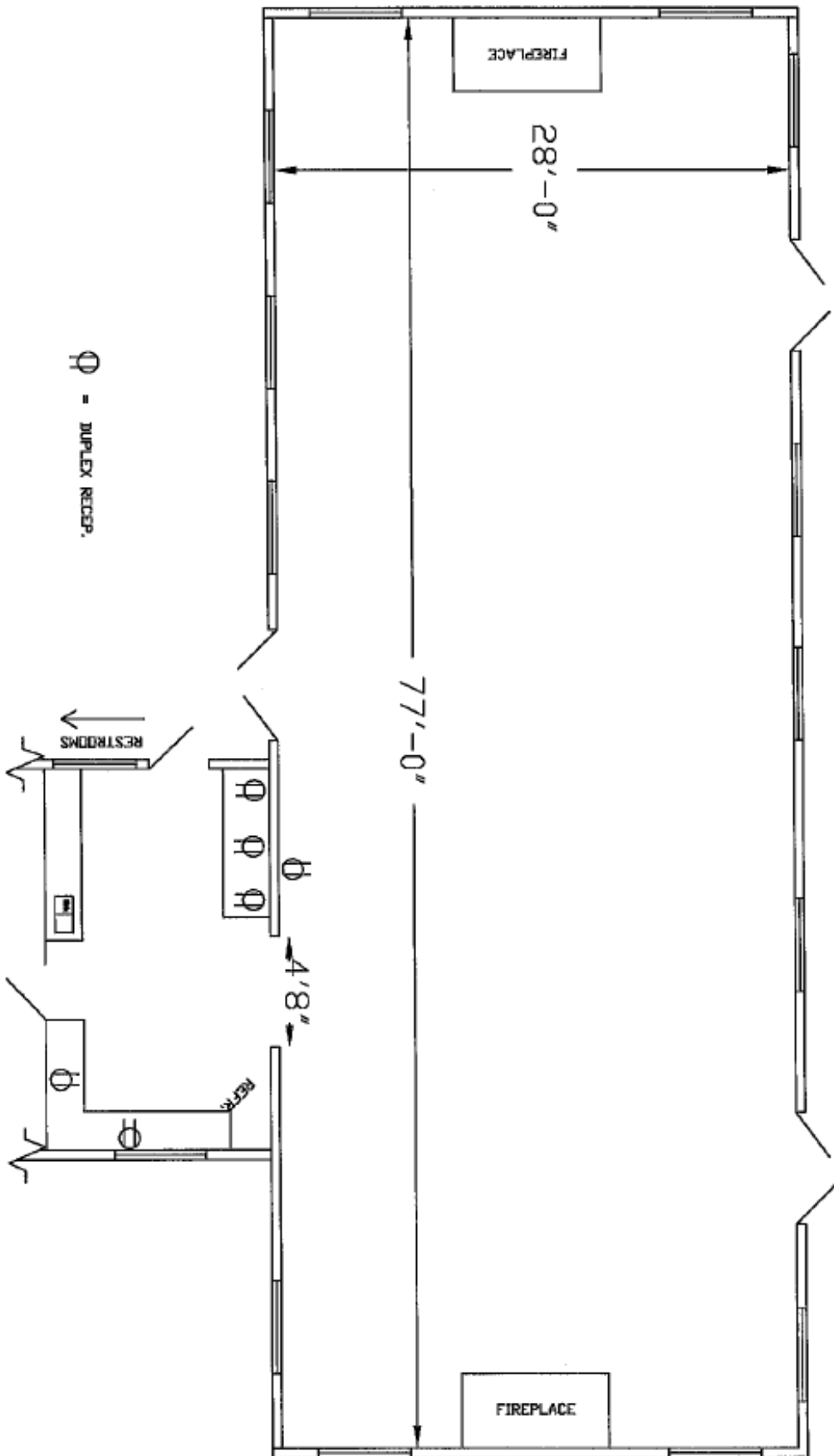
For more information, see "Shelter Policies & Fees" at

<https://www.woodcountywi.gov/Departments/Parks/>

or CHECK US OUT ON FACEBOOK!



NORTH-PARK SHELTER



⊙ - DUPELEX RECEPT.

Scale
1/8"=1'
0' 8'

Note: If above scale doesn't measure 1" in length, then drawing scale is incorrect.

NORTH PARK STONE ENCLOSED SHELTER

Cleaning check list

Basic cleaning supplies are located in the kitchen which includes broom, wipes and garbage bags.

	Remove all decorations, tape from walls, ceilings, tables, windows and eye hooks. No confetti or helium balloons
	Wipe spills from counters, microwave, refrigerator, and floors
	Sweep floor
	Replace tables and chairs back to original location
	Place garbage and recyclables from inside and outside of shelter in to the appropriate containers in the parking lot. Replace Bags
	Extinguish fire in the grill and fireplace
	Take all food and personal items with you
	Turn water faucets off
	Close and lock all windows and doors including the bathroom
	Turn off lights and lock the door

***FAILURE TO COMPLY WITH THE ABOVE WILL SUBJECT THE USER TO BE BILLED FOR THE COST OF LABOR AND/OR REPAIRS**

Please let us know if you have any questions, concerns or comments by sending us an email to parks@woodcountywi.gov.

Would you like to reserve this shelter again? You may do so up to ONE YEAR in advance.

Scan the QR code to be taken directly to the reservation system.

<https://parksreservations.woodcountywi.gov/parks/>

